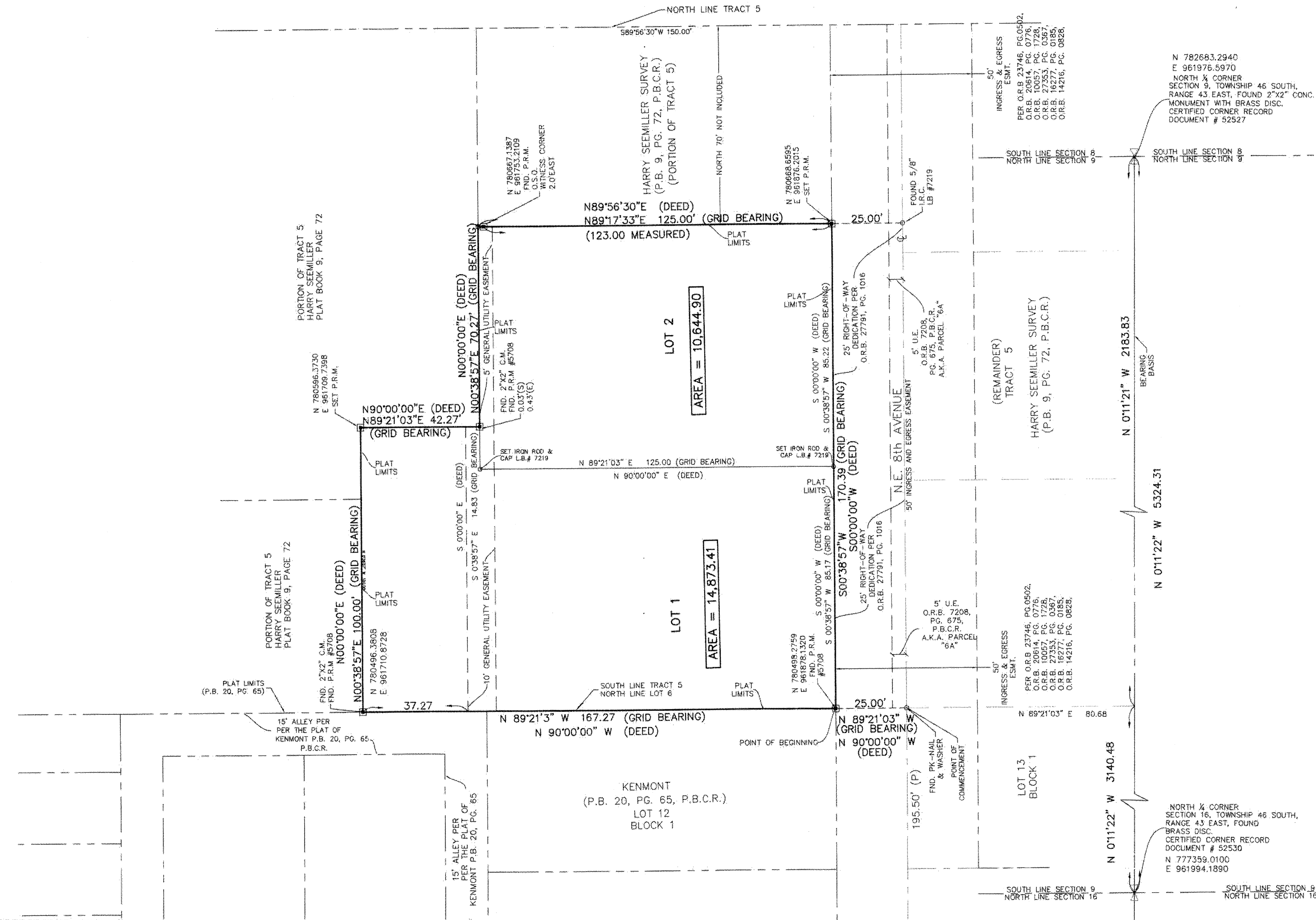
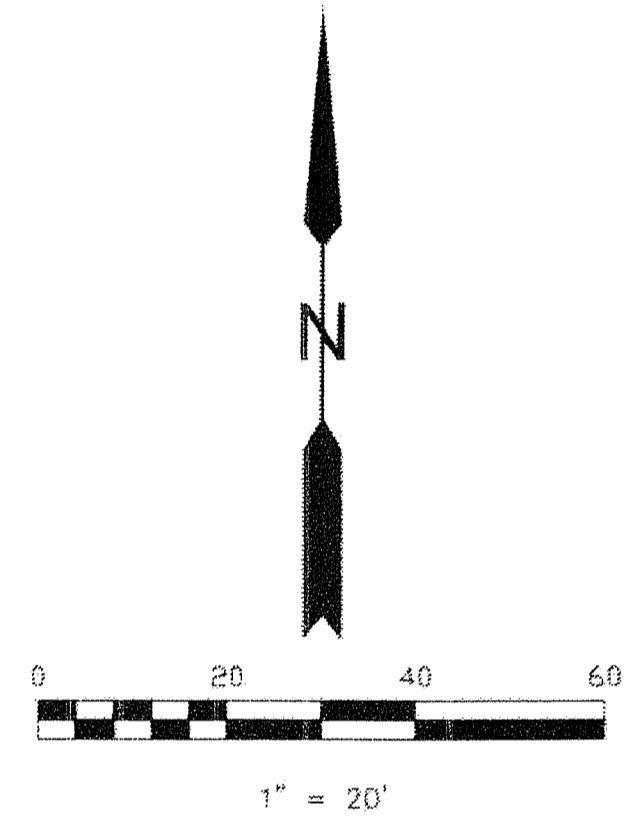


BOND PLAT

A REPLAT OF A PORTION OF TRACT 5, HARRY SEEMILLER, AS RECORDED IN PLAT BOOK 9, PAGE 72 OF THE PUBLIC RECORDS OF PALM BEACH COUNTY, FLORIDA LYING IN SECTION 9, TOWNSHIP 46 SOUTH, RANGE 43 EAST, CITY OF DELRAY BEACH, PALM BEACH COUNTY, FLORIDA SHEET NO. 2 OF 2 AUGUST, 2015

STATE OF FLORIDA
COUNTY OF PALM BEACH
THIS PLAT WAS FILED FOR
RECORD AT _____ M. THIS _____ DAY
OF _____ 2015, AND DULY
RECORDED IN PLAT BOOK
NO. _____
ON PAGES _____ THRU _____
SHARON R. BOCK
CLERK AND COMPTROLLER
BY _____ D.C.



BEARINGS SHOWN HEREON, ARE BASED ON GRID NORTH, (NORTH AMERICAN DATUM 83 (90) ADJUSTMENT) INVERSED BETWEEN THE NORTH 1/4 CORNER AND THE SOUTH 1/4 CORNER OF SECTION 9, TOWNSHIP 46 SOUTH, RANGE 43 EAST, SAID GRID BEARING BEING N 00°11'22" W

THE STATE PLANE COORDINATES SHOWN HEREON ARE BASED ON THE FLORIDA COORDINATE SYSTEM, EAST ZONE, GRID NORTH, 1983 1990 ADJUSTMENT, THE STATE PLANE COORDINATES WERE ESTABLISHED UTILIZING PALM BEACH COUNTY SECTION CORNER HISTORY FOR THE NORTH AND SOUTH 1/4 CORNERS OF SECTION 9, TOWNSHIP 45 SOUTH, RANGE 43 EAST

- LEGEND:
- P.B. = PLAT BOOK (PALM BEACH COUNTY, RECORDS) UNLESS STATED OTHERWISE
 - PG. = PAGE
 - P.R.M. = PERMANENT REFERENCE MONUMENT (4"x4" CONCRETE MONUMENT 1 1/4" STEEL DISC STAMPED P.R.M. LB7219)
 - I.D. = IDENTIFICATION
 - O.R.B. = OFFICIAL RECORD BOOK
 - U.E. = UTILITY EASEMENT



THIS INSTRUMENT PREPARED BY:
PAUL A. DAVIS, INC.
LB #0007219
Land Surveyors Land Development • Consultants • Planners
2091 N.E. 36TH STREET # 50234 LIGHHOUSE POINT, FL 33064
Phone: 954-263-3102
Subdivisions & Condominiums Land & Site Planning • Sanitary Sewer Systems • Water System • Drainage Design • Paving Design
Lot Surveys Mortgage Surveys Acreage Surveys Topographic Surveys • Record Plats • Condominium Plats • Construction Layout